



**Getting Started With Your  
AquaKING RO and RO DI  
Water Purification System  
OWNER'S MANUAL  
(In full color at [www.aquathin.com](http://www.aquathin.com))**

**Includes installation and maintenance information**

**AN ISO 9001:2008 QMS  
REGISTERED /CERTIFIED COMPANY  
(IMS 0192 & NQA-12635)**

© 2009-2016 Aquathin Corporation. All rights reserved.

Under the copyright laws, this manual may not be copied, in whole or in part, without the written consent of Aquathin Corporation.

Every effort has been made to ensure that the information in this manual is accurate. Aquathin Corporation is not responsible for printing or clerical errors.

## **Aquathin Corporation**

Aquathin Business Centre  
950 South Andrews Avenue  
Pompano Beach, Florida 33069  
1-800-GO.2.RODI (462-7634) or 1-954-781-7777  
Fax: 1-954-781-7336  
Email: [info@aquathin.com](mailto:info@aquathin.com)  
[www.aquathin.com](http://www.aquathin.com)

Aquathin Corporation, the Aquathin Corporation logo, AquaKING are trademarks of Aquathin Corporation. Product specifications are subject to change without notice.

### **Your Authorized Aquathin Dealer Is:**

Dealer Name \_\_\_\_\_  
Contact \_\_\_\_\_  
Address \_\_\_\_\_  
\_\_\_\_\_  
Phone \_\_\_\_\_  
Fax \_\_\_\_\_  
Email \_\_\_\_\_

## Introduction

*Thank You* for your purchase. Aquathin turned **"30 in 2010 to enjoy its Pearl Anniversary** and its a great feeling of self satisfaction and accomplishment to be an Authorized Aquathin Dealer. You could not have picked a better time to consider the many benefits of becoming a member of the ever growing Aquathin Family. The Next Quarter Century Celebration Begins !

*Aquathin has earned 7 Patents and manufactures a broad spectrum of unique and proprietary water purification, softening and filtration systems servicing the residential, commercial and laboratory markets. Established in 1980, Aquathin now produces over 70 proprietary and trademarked devices for markets around the world through more than 600 Authorized Aquathin Dealers. Aquathin is an E.P.A. Registered manufacturer, ISO 9001:2008 Certified and recipient of the prestigious President's Excellence Award in Export from the U.S. Commerce Department and the Nation's Blue Chip Enterprise Initiative Award from the U.S. Chamber of Commerce. And we have a very impressive global client list that now includes you and your family. Recently we have launched a project two years in the making, for Authorized Aquathin Dealers to provide total home air and water security...and more. Visit the Aquathin Allergy Store online at [www.aquathin.com](http://www.aquathin.com).*

*Aquathin does not sell franchises nor do we charge for territories. We want to make sure that our Dealers are service oriented and knowledge driven. We know that even though we make the best water treatment systems in the world, ultimately they are only as good as the people representing them...and that is why we make the very best water treatment Dealers in world too. Your local Authorized Aquathin Dealer has received their training and continuous education from Aquathin University. You can be assured that when you purchase from an Authorized Aquathin Dealer (or factory direct in areas where we have yet to approve and establish a Dealer) you are receiving the finest equipment and technical support this industry is able to offer. Highest quality water treatment systems and support good enough for my home...my family.*

*And that is my promise to you ! I love my Aquathin!!*

**FOR THE BEST TASTE IN LIFE &  
35 Years Pure Excellence**

*...and another Quarter Century re-inventing the water industry!  
Think Aquathin...AquathinK !!  
( visit the **NEW** [www.aquathin.com](http://www.aquathin.com) )*

*"Alfie"  
Alfred J. Lipshultz, President*

*P.S. Remember...the next best thing to owning an  
Aquathin is recommending one to a friend !*

# C o n t e n t s

<b>1</b>	<b>Getting Started</b>	<b>7</b>
	<b>Setting Up Your AquaKING System</b>	<b>7</b>
	Unpack the System	9
	Required Tools	9
	Planning the Installation	10
	Installing the Chrome Faucet Assembly	10
	Installing the Feed Water Saddle Valve	11
	Installing the Drain Saddle Valve	12
	Preparing to Mount the Main Assembly	13
	Mounting the De-Ionization Module	14
	Making the Tubing Connections	15
	Connect Cold Water Supply Line	16
	Connect Drain Line	17
	Connect DI Module to Main Assembly	18
	Mount the Main Assembly	18
	Prepare Storage Tank	19
	Connect DI Module to Storage Tank	19
	Connect GAC Post Filter	20
	Starting Your System	20
	Flushing	22
<b>2</b>	<b>Getting to Know Your AquaKing System</b>	<b>23</b>
	<b>A Look At The Key Components</b>	<b>23</b>
	Aquathin Sediment Filter	23
	Granular Activated Carbon	24
	Aquathin Reverse Osmosis Membrane	24
	Aquathin Deionization Module	25
	<b>Operating Parameters</b>	<b>26</b>
	Pressure	26
	pH	26
	Chlorine and Chloramines	26
	Sediment	27
	Iron	27
	Hardness and More	28

<b>3</b>	<b>Maintenance And Servicing</b>	<b>30</b>
	Flushing	30
	Filter Replacement	31
	Replacing the Sediment Pre-filter	32
	Replacing the Aquathin GAC Pre-filters	32
	Replacing the Aquathin DI Module	32
	Returning the System to Service	34
<b>4</b>	<b>Frequently Asked Questions</b>	<b>36</b>
<b>5</b>	<b>Limited Warranty</b>	<b>40</b>
	What The Warranty Covers	40
	Exceptions To Lifetime Warranty	40
	What We Will Do To Correct An Inconvenience	41
	How State Law Relates To The Warranty	41
<b>A</b>	<b>ppendix A - Specifications</b>	<b>42</b>
<b>A</b>	<b>ppendix B - Replacement Schedule</b>	<b>44</b>
	Replacement Components and Schedule	44
	Maintenance Log	45
<b>A</b>	<b>ppendix C - Connections</b>	<b>46</b>
	Sink Mounted Faucet Assembly	46
	John Guest Speedfit® Fittings	47
	AquaKING Series Installation Diagram	48
<b>A</b>	<b>ppendix D - Schematic</b>	<b>49</b>



CHAPTER

1

## **GETTING STARTED**

Thank you for purchasing this quality water purification system by Aquathin Corporation. Every Aquathin AquaKING Series system combines several of most efficient methods of water treatment to achieve a very specific result—pure water that meets the specific result — pure drinking and cooking water free of any and all dangerous contaminants.

As the new owner of an Aquathin RO/DI water purification system there is a totally new experience awaiting you. You and your family will be amazed at the delightful new taste of your tap water—it's like owning your own personal mountain spring.

This manual provides information about the application and servicing of your Aquathin water purification system. Descriptions of the components and their functions will help to answer frequently asked questions. By thoroughly reading this manual you will be better able to operate your new system and perform simple maintenance.

## **SETTING UP YOUR AQUAKING SYSTEM**

Your Aquathin AquaKING system requires no electricity—the only requirement is adequate water pressure. This unit is designed to operate within a pressure range of 40–100 PSI (3.1-6.9 bar). The amount of purified water produced depends primarily on your

water pressure, temperature, and the amount of Total Dissolved Solids (TDS). Normal production averages up to 45 gallons (~170 ltr) per day. If you plan to install this unit on a private well system, you should check your water pressure gauge. If the low pressure setting is less than 40 PSI, ask a plumber to adjust and raise the pressure to the minimum level of 40 PSI. An optional booster pump (PBA-AK) is available when source pressure is severally low. Installation to comply with state and local laws and regulations.

**IMPORTANT NOTE:**

For private well owners we recommend that you choose the AK40 with PBA-AK Booster pump system which includes a booster pump and is completely configured at the factory. This eliminates fluctuations in line or low pressure associated with private wells and ensures your AquaKING system operates at peak efficiency.

While 45PSI is enough to produce water with the exceptional purity required to pass Aquathin standards, you may find water flow to the faucet is less than optimal, and that your holding tank will not store much water. (The amount of water stored is a function of line pressure).

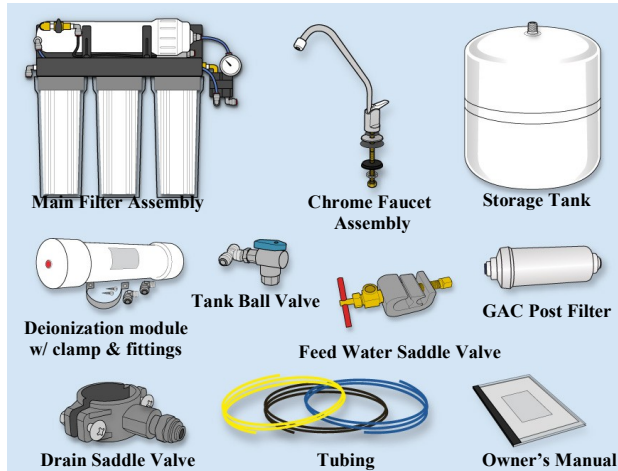
**Installing Your AquaKING System Requires the Following Steps:**

- Install the sink-mounted chrome faucet.
- Install the feed water saddle valve to deliver tap water to your system.
- Install the drain saddle valve so contaminants can be flushed down the drain.
- Mount the DI Module and Frame Assembly to the cabinet sidewall (optional).
- Make the tubing connections.



## 1) Unpack the System

Contents include:



\* Ice Maker Tee (see page 49)

### Required Tools:

Hi Speed Drill	#2 Phillips Screw Driver
¼" High Speed Drill Bit	Teflon thread tape
½" High Speed Drill Bit	Razor knife with fresh sharp blade
⅛" High Speed Drill Bit	Adjustable (Crescent) Wrench
For porcelain sinks, a Dremmel® tool and ⅜" silicon carbide grinding wheel or a Glass & Tile carbide spade-tipped bit.	For granite counter-tops, you will need to have a professional drill a ½" hole.

## Planning the Installation

Review the following instructions completely before proceeding. (See installation diagram on page 48.)

Aquathin AquaKING systems are comprised of several compact components which fit easily beneath most kitchen sinks. We encourage you to establish the desired location of each of the components before proceeding. Installing the main assembly against the left sidewall is recommended whenever possible. The storage tank has built-in feet for upright positioning and it can be placed on its side when space is limited. (A stand is included.)

## Installing the Chrome Faucet Assembly

1) Select a location for the faucet on the sink top.

NOTE: Make sure there are no reinforcing ribs under the sink drilling location.

2) Use factory approved method or approved plumbing practice to drill hole in sink.

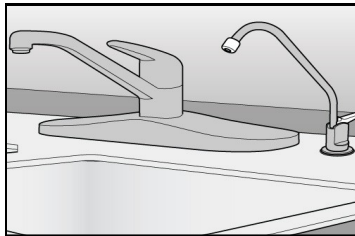


Figure 1, Pure Water Faucet (see detail in Appendix C)

Porcelain sinks: factory approved method is: first grind away porcelain with a Dremmel® tool and silicon grinding wheel (about 3/4" circle). Then, use a standard 1/2" high-speed drill bit to drill hole through metal portion of sink. (See Figure 2, next page) Alternately, use a "glass and tile carbide spade tipped bit."

Acrylic sinks: use 1/2" high-speed drill bit.

Stainless Steel sinks: use 1/2" high-speed drill bit or 1/2" Greenlee chassis punch.

3) Install faucet according to detailed diagram in Appendix C—page 46, insuring rubber gaskets are place. Tighten lock nut beneath sink. Save compression fitting parts for connection to GAC post-filter.

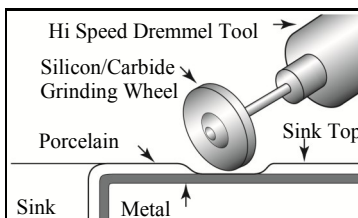


Figure 2, Using a Dremmel® Tool to Remove Porcelain

### Installing the Feed Water Saddle Valve

The saddle-type valve supplied is intended for use on  $\frac{3}{8}$ " to  $\frac{1}{2}$ " copper tubing cold water supply line. It is not intended for flex lines.

#### Install on cold water line only!

- 1) Turn off the cold water valve under the sink or the main valve for the house.
- 2) Slide clamp over the copper tubing and tighten screw firmly to hold the clamp in position.
- 3) Pierce the copper tubing by turning the needle valve handle clockwise until it is firmly seated.

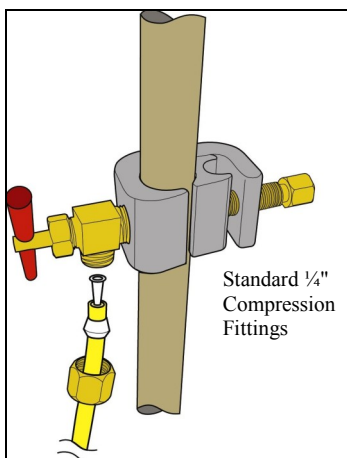


Figure 3, Feed Water Saddle Valve

- 4) The valve is closed in this position. Turn on the MAIN supply valve to pressurize cold water line. Immediately check for any signs of leaks.
- 5) Set aside compression fittings for later use connecting yellow feed tubing to system.

When ready to supply water to the system, turn valve handle counter-clockwise until fully open.

In some instances the self-piercing valve provided will not be compatible with your plumbing. We have provided a feed valve that will satisfy most scenarios. Alternate parts using standard 1/4" compression fittings can be found at plumbing supply or home improvement stores. On rare occasions, it may be necessary to contact a plumbing contractor to complete your installation.

### Installing the Drain Saddle Valve

The drain saddle assembly should be installed above the trap and on the vertical or horizontal tailpiece. (See Figure 4)

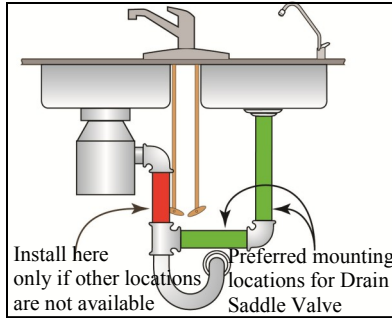


Figure 4, Drain Saddle mounting locations

Refer to Figure 5 (below right) and follow steps 1 through 4.

NOTE: When installing the Main Assembly, mount the frame above the position of the drain saddle whenever possible. (See Figure 8 the next page.)

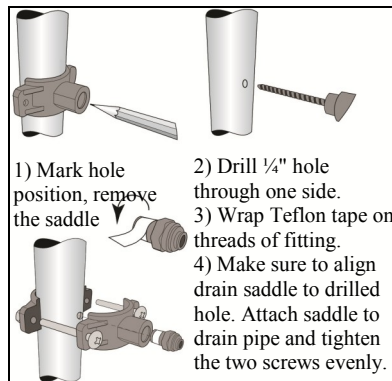
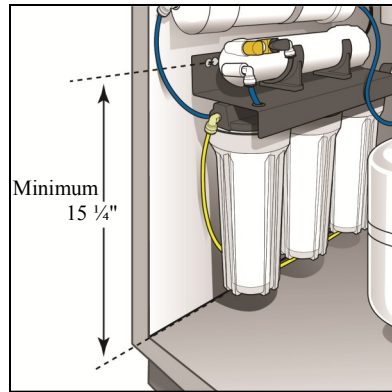


Figure 5, Mounting the Drain Saddle Valve

## Preparing to Mount the Main Assembly

When possible we recommend mounting the main assembly on the left sidewall of the cabinet, but this is not a requirement. It is not required the system be mounted at all—many owners choose to let the main assembly stand unsupported on the floor of the cabinet.

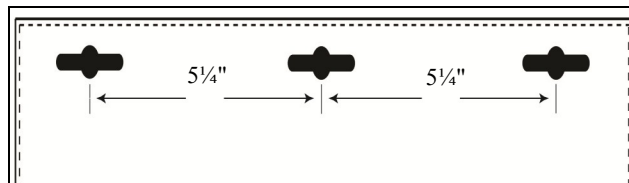


*Figure 6, Minimum space needed to perform service without removing main assembly from sidewall.*

Mounting the system will make it easier to perform periodic and annual maintenance. Allowing 15 1/4" from the cabinet floor to the keyholes will allow the pre-filter canisters to be removed without taking the main assembly off the wall.

Install the screws provided allowing for the thickness of the frame. (A pilot hole using a 1/16" drill bit is recommended for particle board side-walls.)

NOTE: Do not hang the assembly until tubing connections have been made (following pages.)



*Figure 7, Spacing between keyholes (diagram not drawn to scale)*

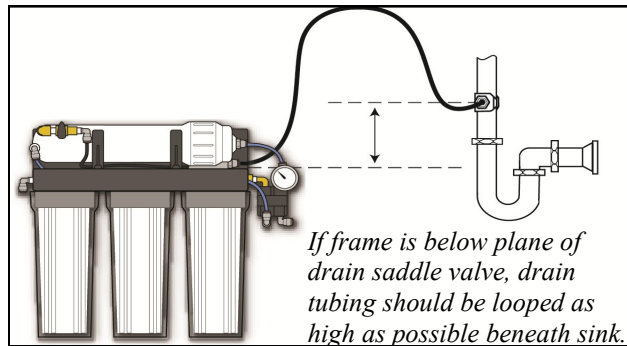


Figure 8, Drain Tubing Connection

It is best to have the anodized aluminum frame placed above the plane of the drain saddle valve whenever possible. When this is not possible, extra care must be taken when routing tubing from the assembly to the drain saddle valve. (See Figure 8, above.)

Before proceeding, make sure the three pre-filter canisters are firmly attached.

**Mounting the Deionization Module (If purchased as DIMS VS AK 40 DI complete)**

The Aquathin 4 stage Deionization (DI) module can be placed anywhere convenient inside the cabinet. Keep the distance between the main assembly, storage tank, and DI module as short as possible. The DI module can be mounted horizontally (preferred) or vertically. If mounted vertically, the outlet should be at the bottom.

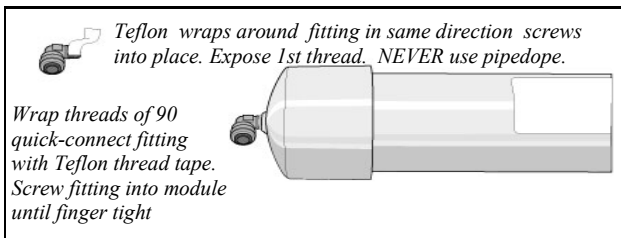


Figure 9, Installation of 90° Speedfit Fittings into Deionization Module

1) Establish the position for the Deionization module.

If mounting above the main assembly (See Figure 6, Page 13; and Appendix C, page 46) be sure to allow adequate space to attach the main assembly. (Allow approx. 3" from the bottom screw of the DI mounting band to the screws supporting the main assembly.)

2) Secure the module to the wall of the cabinet using the supplied stainless steel clamp and screws.

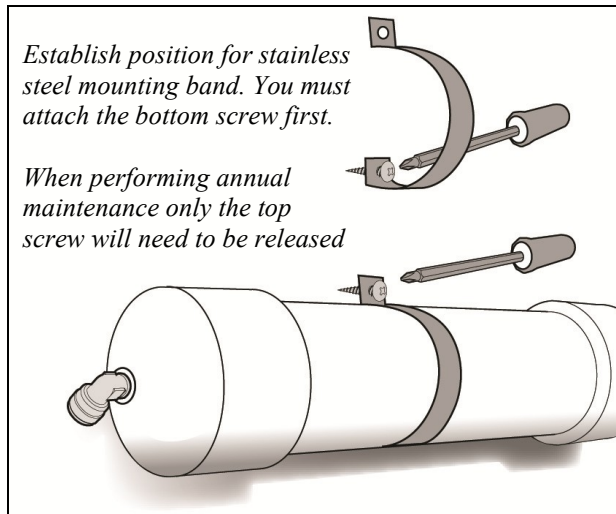


Figure 10, Mounting the Deionization Module

### **MAKING THE TUBING CONNECTIONS**

You have completed the bulk of the installation tasks. All that remains is connecting tubing between the components. Three lengths of tubing have been supplied:

- ◆ Yellow tubing to connect the feed water saddle valve to the inlet on the main assembly.

◆ Black tubing to connect the drain saddle valve to the drain line check valve on the right rear of the main assembly frame.

◆ Blue tubing for all purified water connections: main assembly to DI module, DI module to tank, tank to GAC Post-filter, and Post-filter to faucet.

NOTE: When cutting the poly tubing, DO NOT USE SCISSORS. Use a razor knife with a fresh blade. Do not crimp or collapse the tubing. Cut the tubing with a clean, 90° angle. This will allow the tubing to seat firmly into the fittings, creating a secure and leak free connection.

### **Connecting Tubing to John Guest *Speedfit*® Fittings**

Aquathin systems make extensive use of John Guest *Speedfit*® fittings. These high quality components provide secure, leak free seals and make it easy to connect and disconnect tubing without the use of tools.

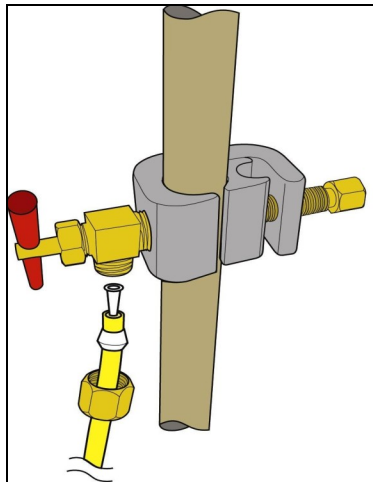
Refer to diagrams on page 47, Appendix C.

#### **Connect Cold Water Supply to Feed Water Inlet**

Measure and cut a length of **yellow** tubing to connect the feed water saddle valve to the inlet on the left side of the frame assembly.

Connect the tubing to the saddle valve using the compression fittings provided.

(See Figure 11, and installation diagram on page 48.)



*Figure 11, Connect tubing as diagrammed*



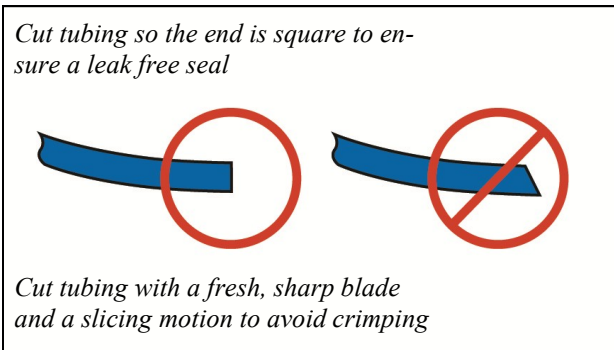


Figure 12, Cut tubing square. Do not use scissors.

### Connect the Drain Line

Measure and cut a length of **black** tubing to connect the drain water check valve on the frame assembly to the drain water saddle valve.

(See Figure 13, right, and installation diagram on page 48.)

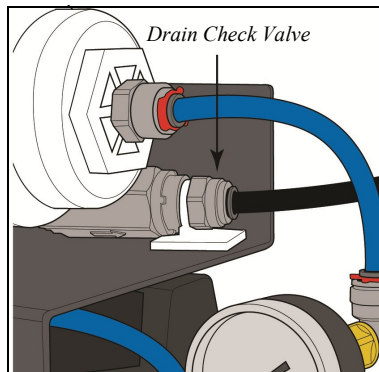


Figure 13, Drain Line Connection

**IMPORTANT:** If the frame of the main assembly is not above the drain saddle valve, you will need to loop the tubing as high as possible beneath the sink. Be sure to allow for this loop when you measure. (See Figure 8 on page 14.) A self-adhesive tubing clip has been provided to secure the drain loop.

### Connect DI Module to Main Assembly (DIMS VS. Complete)

Measure and cut a length of blue tubing to connect the reverse osmosis (RO) water outlet on the main assembly to the INLET of Deionization module. Typically, this tubing is routed behind the main assembly. Insert tubing into fittings and secure with red lock clips provided. (See Figures 14 & 15, and installation diagram on page 48.)

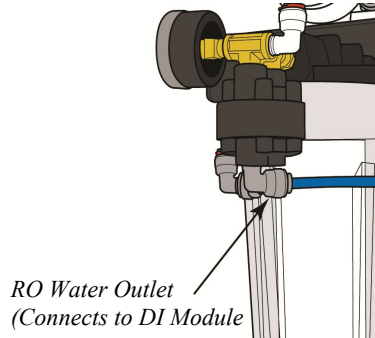


Figure 14

NOTE: There is an arrow indicating direction of flow on the DI module label.

### Mount the Main Assembly to Cabinet Sidewall

With the cold water supply, drain line, and DI module connected, the main assembly can now be placed onto the screws previously installed. Place the keyhole openings over the screws then slide the frame horizontally onto the mounting screws.

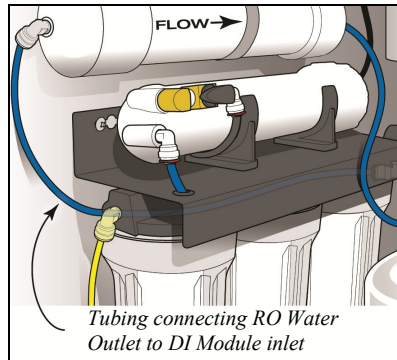


Figure 15

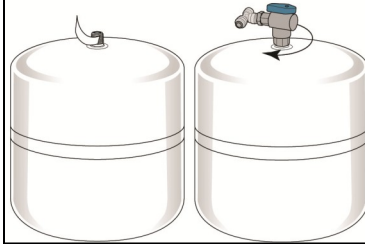
You may wish to remove the main assembly and adjust the screws to make the connection as secure as possible.

## Prepare Storage Tank

Wrap Teflon pipe tape on the threads of the storage tank, then place three (3) drops of regular household chlorine bleach into the opening.

Close the tank ball valve by turning the blue handle perpendicular to the valve body, then screw the valve onto the storage tank until firm. DO NOT OVER-TIGHTEN. (See Figure 16 .)

*Wrap pipe tape on threads. Follow label instructions to ensure disinfection before attaching tank ball valve. Close valve to prevent chlorine from escaping.*

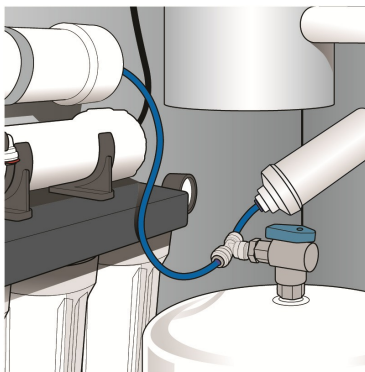


*Figure 16, Storage Tank Preparation*

Determine the position for the storage tank beneath the sink. If space is at a premium, it is OK to lay the tank on its side. A stand is included.

## Connect DI Module to Storage Tank

With the tank in position, measure and cut a length of blue tubing to connect the OUTLET of the DI module and the “T” connector on the tank ball valve. (See Figure 17, right)



*Figure 17,  
DI Module to Storage Tank Connection*

### **Connect GAC Post Filter between Storage Tank and Faucet**

Refer again to the diagram on page 48 in Appendix C. The GAC post-filter is typically installed just below the faucet assembly and is easily supported by the tubing and Speedfit® fittings.

Measure and cut a length of **blue** tubing to connect the outlet of the GAC post-filter to the faucet assembly. Placing the post-filter near the tank will make it easy to service when needed.

Connect one end of the **blue** tubing to the threaded stem of the chrome faucet assembly using the ¼" compression fittings provided. (See Figure 12 on page 17.)

Connect the opposite end of the **blue** tubing to the outlet of the GAC post-filter.

Finally, measure a length of **blue** tubing to connect the storage tank to the GAC post-filter.

Leave the handle on the tank ball valve closed at this time.

Congratulations! You have completed the installation of your Aquathin AquaKING water purification system. You are now ready to begin making pure, Aquathin quality drinking water.

### **Starting Your System**

- 1) Open the chrome faucet on the sink top.
- 2) Verify the Tank Ball Valve is closed.
- 3) Put Flush Valve into the "Open - Flush" position. (See Figure 18, page 22)
- 4) Slowly open your cold water supply valve. Water will begin to fill the three pre-filter canisters. You

will also begin to hear water flowing past the flush valve and into the drain.

- 5) The system might “chug” and appear to start and stop. If this occurs close the Flush Valve half way to create back-pressure on the line.
- 6) Let the system “Flush” for about 10 minutes, then close the Flush Valve.
- 7) Check the pressure gauge. Record your initial pressure in Appendix B.
- 8) In approximately 20 minutes you will begin to see water drip from the faucet.
- 9) Close the chrome faucet on the sink top, and then quickly open the Tank Ball Valve to allow the storage tank to fill. Actual production rate will vary slightly depending on pressure, but your system will normally produce water at a rate of ~1.5 to 1.75 gallons per hour. The first tank of water may take longer.
- 10) **DISCARD THE FIRST FULL TANK OF WATER.** Open the faucet and let the water flow until only a trickle remains. Close the faucet and allow the tank to fill a second time. You are now ready to enjoy the great taste of 100% pure, Aquathin drinking water. (The RO membrane contains a preservative solution that will be flushed after the first tank of water is produced.)

### **Flushing**

Flushing is the single most important maintenance function needed to keep your system operating at peak efficiency. This simple operation only takes a few minutes and extends the service life of the reverse osmosis membrane.

1) Flushing is only possible when the system is filling. Pressure gauge will read zero (0) when the system is idle. Empty the storage tank until you hear water begin to flow.

2) Move the handle on the flush valve to the “Open - Flush” position. This will allow water to flow rapidly across the RO membrane, washing away concentrated contaminants.

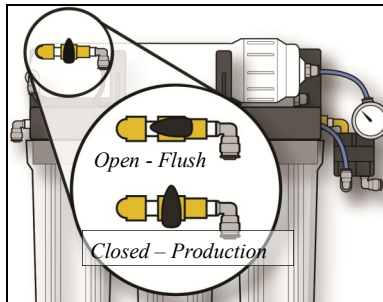


Figure 18, Manual Flush Valve

3) Set a kitchen timer so you do not forget to return the flush valve to the closed position.

**Flushing once per week for 5 minutes is ideal.** If you forget to flush the system for an extended period of time perform an exhaustive flush by leaving the flush valve open for 20 minutes.

If your unit has not been used for more than one week (e.g. while you are on vacation), drain the storage tank (use the water for watering plants, etc.) then flush the membrane for 5-10 minutes as described above.

**IMPORTANT:** Monitor your system and check for leaks frequently over the first week. Most leaks are attributed to tubing not fully seated inside the Speedfit® fittings. Remove the red lock clip, compress the collet, and remove the tubing. Re-insert the tubing until you feel it bottom out on the tubing end-stop. Replace the red lock clip. This process solves 99% of leaking connections. If the leak persists, trim ¼" – ½" off the end of the tubing and try again.



CHAPTER

2

## **Getting to Know Your Aquathin AquaKING System**

Your Aquathin AquaKING system combines the three most effective water purification technologies available. Alone, each of these methods is highly effective at a particular group of pollutants—but only when combined can you be assured of complete removal of all contaminants. Every system combines Carbon Adsorption, Reverse Osmosis, and Deionization. By carefully matching the components utilizing these methods, Aquathin has earned a patent to assure your system produces water which meets or exceeds the standards for bio-compatibility and purity.

### **A LOOK AT THE KEY COMPONENTS**

#### ***Aquathin Sediment Filter***

Water entering the system is first subjected to our spun-Polypropylene dual gradient (10-5 microns) sediment pre-filter. Any suspended particles such as sand, rust, or other deposits commonly found in the feed water supply are removed. This protects the Aquathin Reverse Osmosis Membrane from particles which might clog the pores. This pre-filter has been carefully manufactured for its extremely high dirt holding capacity and removal of oil emulsions.

### ***Granular Activated Carbon***

Before water reaches the Aquathin Reverse Osmosis Membrane, it is subjected to twin, “Aquathin unidirectional” Granular Activated Carbon pre-filters. Flow is lengthwise, not radial, for maximum contact time and organic adsorption. Aquathin has designed twin carbon filters in this stage where other ordinary assemblers use only a single cartridge. By using twin cartridges we insure complete removal of organic contaminants including pesticides, herbicides, and other hydrocarbon based compounds.

A single gram of steam washed, bituminous grade, granular activated carbon typically has ~1500 square meters of surface area—meaning our twin GAC pre-filters provide over 400 acres (1.62 square kilometers) of surface area where organic contaminants dissolved in the water have an opportunity to be adsorbed and eliminated. This immense GAC surface area also insures complete and total conversion of chlorine and chloramine—protecting the Aquathin polyamide thin-film-composite (TFC) Reverse Osmosis Membrane downstream.

### ***Aquathin Reverse Osmosis Membrane***

A custom designed and extremely efficient High Flow (XF-HRO) spiral wound Reverse Osmosis Membrane produces up to 45 gallons (~170 liters) of purified water per day. The Aquathin RO Membrane utilizes the unique properties of a semi-permeable material which allows passage of pure water molecules while not allowing dissolved salts, heavy metals, organics and disease causing water-borne microorganisms to pass through. Our extraordinary membrane is designed to consistently and significantly reduce the total dissolved solids in the source water supply by greater than 97%. It also has a tremendous capacity to completely reject organic and biological contaminants,



including disease causing water-borne microorganisms.  
EPA EST. NO. 52531-FL-01

The Aquathin Reverse Osmosis Membrane used in this system can tolerate significantly higher concentrations of oxidizing contaminants like iron and manganese than RO membranes found in other systems, as well as a much higher degree of hardness. However, there are limitations—the operating parameters for this membrane are found in the Specifications section of this manual.

### ***Aquathin Deionization Module***

This stage contains a unique blend of proprietary deionization resins carefully matched to our Reverse Osmosis Membrane and provides superior rejection of monovalent ions, fluoride, and nitrates; contaminants only partially removed by reverse osmosis. Including deionization after reverse osmosis sets Aquathin systems apart from other ordinary RO systems.

Following the DI resins, there is even more granular activated carbon to polish the product water for a clean, fresh taste. The flow rate at this stage provides tremendous contact time to assure complete removal of any remaining organic contaminates.

The final stages of our proprietary DI module are included to prevent the reverse migration of contaminates into the system. These stages further separate Aquathin systems from other brands. After carefully combining the previous components it is essential to integrate these stages to ensure 99.999% removal of bacteria, cyst, and virus (EPA EST. No. 52531-FL-01). These stages also prevent any contaminants from entering the system via the faucet.

## **OPERATING PARAMETERS**

To insure proper operation of your AquaKING system, it is advisable to collect the following information about your water supply. This information is generally available from your municipal water department, and in many cases is available from the website of your local Department of Public Works.

### ***Pressure***

In order to overcome the natural osmotic force, adequate water pressure must be available from your water supply. The osmotic force is directly proportional to the concentration of dissolved solids in the water. When the water pressure is equal to the osmotic force, there will be no movement of pure water molecules across the semi-permeable reverse osmosis membrane. A minimum of 45 PSI is required. (If your water pressure is below 45 PSI, a booster pump is available. If you are on a private well, have your plumber raise the minimum pressure above 45 PSI.)

In general, the higher the pressure (up to 100 PSI), the better the performance of the membrane at rejecting contaminants.

### ***pH***

The Aquathin HRO TFC membrane will hold up very well when the pH of the feed water is between 2 and 11. Water supplies with pH over 11 are very rarely, if ever, found. (Chlorine bleach has a pH of ~11.5.)

### ***Chlorine and Chloramines***

Chlorine is the most common substance added to municipal water supplies. Its purpose is to eliminate biological growth (i.e. chlorine is toxic). Regulations usually require there be residual chlorine when water reaches your tap. Typically, the residual concentrations of

chlorine in household water range from 0.5 to 1.0 parts-per-million (ppm).

Besides being toxic, chlorine and chloramines will degrade the TFC Reverse Osmosis Membrane. Therefore, it is essential to remove chlorine from your feed water before it reaches the RO membrane. Your Aquathin RO/DI system includes a pre-filter containing a special grade of grade of Granular Activated Carbon (GAC) which will very effectively remove chlorine and chloramines from your tap water. It is important to replace the pre-filter annually to insure no chlorine is reaching the membrane.

### ***Sediment***

In areas with very high sediment concentrations the Aquathin pre-filter may clog prematurely. If the pre-filter becomes clogged, you will likely notice a decrease in the production rate from your system. In areas with very high sediment concentrations, it may be necessary to replace the pre-filter on a semi-annual basis.

Over the course of one year, the sediment filter will typically become significantly discolored. This is not cause for alarm. If you notice pressure at the gauge has dropped significantly below your initial observations, consider changing this filter to restore adequate pressure and improve overall system performance.

### ***Iron***

Iron concentrations greater than 0.1 mg/l can degrade overall system performance. If your water supply has iron concentrations above 0.1 mg/l, pretreatment is recommended for ordinary RO systems. Your patented Aquathin process will tolerate up to 3 ppm iron.

### ***Hardness and More***

Two thirds of the water on earth is groundwater. As it travels through rock and soil it picks up particles of calcium, magnesium, iron, lead, and other minerals. For 85% of the country, that translates into “hard water”. “Hardness” refers to the amount of calcium and magnesium in the water and is measured in grains per gallon (gpg). The following guide defines your water’s hardness based on two different measurements. Our test determines the grains of hardness that can easily be converted into the ppm.

<b>Description</b>	<b>Grains of Hardness</b>	<b>Parts per Million</b>	<b>Laundry Detergent Required</b>
<b>Soft (ideal)</b>	0.0—1.0	0—18	1/4 dispenser
<b>Slightly Hard</b>	1.0—3.5	18—60	1/4 dispenser
<b>Moderately Hard</b>	3.5—7.0	60—120	1/2 dispenser
<b>Hard</b>	7.0—10.5	120—180	1/2 dispenser
<b>Very Hard</b>	10.5—over	180—over	Full dispenser

Most of the problems associated with hard water are economical in nature. Hardness causes unsightly soap scum on fixtures, water spots on glasses and whitish scale deposits in your tubs and showers. Hard water means you use more soap and cleaning agents because they first have to “clean” the water before they clean anything else.

**H**ere is a little additional information about the ordinary RO systems sold in hardware stores and wholesale clubs:

1) They state their systems must be installed on water with less than 10 grains of hardness. Otherwise you need an expensive water softener just for the RO system. Your Aquathin can be installed on hard water up to 25 grains due to the patented flush.

2) There is a disclaimer that those units may not be installed on microbiologically unsafe water. But would that not be a reason one would purchase a system? Your Aquathin will remove disease causing waterborne microorganisms

3) Their warranty is one year, but does not cover the RO membrane, yet that is the heart of the unit. When service is needed, you must ship the system out of town. Some require the membrane to be replaced every 6 months according to them. Your Aquathin carries a Lifetime Warranty except for normal filter changes and abuse.

**Y**ou originally invested in your Aquathin to provide your family the very best in total home water security. There is hardly anything in this world that a man could not make a little worse or a little cheaper, and the people who consider price alone are this man's lawful prey. It's like this: we would rather explain price once than apologize for poor quality and service the rest of our life. In 1980 Aquathin made the decision at the onset; that we would never sacrifice or lower quality for price... too much depends on it. Would you prefer that your family drink from a system whose poor technology and cheap design allows them to continue to consume contaminates...or a product that provides the safest and most pure drinking and cooking water available?

***I LOVE MY AQUATHIN!***

CHAPTER

3

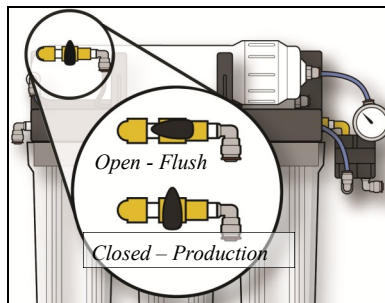
## Maintenance and Servicing

Minimal work is required to keep your Aquathin AquaKING system in peak operating condition. Simply follow a regular schedule of flushing and replace the filter modules as recommended. These simple steps will insure your unit consistently produces ultra-pure water meeting Aquathin standards. Take care of your Aquathin system and it will provide many years of healthful drinking and cooking water for your entire family.

### *Flushing*

Flushing is the single most important maintenance function needed to keep your system operating at peak efficiency. This simple operation only takes a few minutes and extends the service life of the reverse osmosis membrane.

1) Flushing is only possible when the system is filling.



Pressure gauge will read zero (0) when the system is idle. Empty the storage tank until you hear water begin to flow.

2) Move the handle on the flush valve to the “Open - Flush” position. This will allow water to flow rapidly across the RO membrane, washing away concentrated contaminants.

3) Set a kitchen timer so you do not forget to return the flush valve to the closed position.

**Flushing once per week for 5 minutes is ideal.** If you forget to flush the system for an extended period of time perform an exhaustive flush by leaving the flush valve open for 20 minutes.

If your unit has not been used for more than one week (e.g. while you are on vacation), drain the storage tank (use the water for watering plants, etc.) then flush the membrane for 5-10 minutes as described above.

## **FILTER REPLACEMENT**

After 12 months of use, it is time to replace the Aquathin sediment pre-filter, the Aquathin twin GAC carbon filters, and the Aquathin Deionization Module to insure your system continues to produce water within Aquathin parameters. Replacement modules can be ordered directly from your local Authorized Aquathin Dealer.

1. Remove the contents from beneath the kitchen sink where the Aquathin AquaKING assembly is located.
2. Turn off the cold water supply line.
3. Drain ALL the water from the storage tank by opening the sink mounted faucet.
4. Close the faucet and the ball valve on the top of the storage tank.

5. Open the Flush Valve (relieves pressure)
6. Place a towel beneath the pre-filter/RO assembly—it will absorb the small amount of water that will spill from the modules as they are changed out.

It is often helpful to have an empty 3-5 gallon bucket nearby.

#### ***Replacing the Aquathin Sediment Pre-filter***

The sediment pre-filter is in the canister on the left side of the assembly, beneath the manual flush valve. The sediment pre-filter will likely be distasteful looking—it is common for sludge to form on the filter surface. After one year, this sludge layer can be fairly thick. The good news is, if the sediment filter and AquaKING did not catch this “guck”, your body would!

- a) Push the red button (on the top of the aluminum frame, above the pre-filter canister) to reduce any back pressure remaining in the canister.
- b) Firmly grasp the canister with both hands and unscrew it from the pre-filter assembly. (A canister wrench is available.) Carefully move the canister over the bucket, dump the water, and remove the old pre-filter.
- c) Using a long handled, soft bristle brush, scrub the inside of the canister with a mild dish washing detergent and rinse.
- d) Place the new pre-filter into the canister, and then carefully re-attach the canister to the assembly. Tighten until firm.

#### ***Replacing the Aquathin GAC Pre-filters***

The twin unidirectional, GAC pre-filters are in the middle canister and the canister on the right. Follow the same procedure as described for replacing the sediment pre-filter (above).



### ***Replacing the Aquathin DI Module***

(Refer to page 47, Appendix C, for details on releasing tubing from Speedfit® fittings)

- 1) Disconnect the tubing from both ends of the DI module. Some water will pour from the tubing once released. (If the DI module was mounted vertically, you might find less water will be spilled if you remove the tubing from the outlet end after removing the module from the retaining clamp.)
- 2) Remove the top screw from the clamp and remove the old DI module. (The clamp is flexible and can be bent out to allow the module to be removed.) Note the direction of flow. You will need to install the new DI module in the same orientation.
- 3) Unscrew the Speedfit® fittings from both ends of the module. Scrape away the old Teflon® thread tape (without damaging the plastic threads) and re-wrap the threads.
- 4) Install the Speedfit® fittings into the new DI module.
- 5) Place the new DI module into position, taking care to note the direction of flow. Secure the clamp and re-connect only the tubing from the main assembly. Gently tug on the tubing to insure a secure, leak free connection.

The next step will disinfect and sterilize the storage tank:

- 6) Carefully place a few drops of regular household bleach into the tubing that connects the outlet of the DI module with the storage tank before connecting the tubing to the DI module. (As the tank fills with water for the first time, it will be subjected to a strong but continually diluting solution of chlorine.)

Alternate disinfection procedure:

- a) Disconnect the tubing from the “T” connector on the tank ball valve and remove the storage tank from beneath the sink.
- b) Wrap a towel around the ball valve and slowly unscrew the valve from the storage tank. There is always some water remaining in the tank and this will escape when the valve is removed. After setting the valve aside, place the towel over the tank opening and shake and rotate the tank to remove any remaining water.
- c) Re-wrap the threads with Teflon® pipe tape.
- d) Now place a few drops of liquid chlorine bleach into the top of the tank and re-install the tank ball valve (with the valve in the closed position).
- e) Reconnect the tubing to the swivel “T” connector.

### ***Returning the AquaKING System to Service***

To return your system to service:

1. Verify the manual flush valve is in the “Open - Flush” position.
2. Open the valve on top of the storage tank.
3. Slowly re-open the cold water supply line. The pre-filter canisters should begin to fill.
4. After ten (10) minutes, move the manual flush valve to the “Closed - Production” position.
5. Check for leaks around the tops of the pre-filter canisters. If water is seeping from any of the canisters turn the cold water supply off, move the manual flush valve to the “Flush” position, and then

relieve line pressure by pressing the red button on top of the canister. Unscrew the leaking canister from the assembly. Check to be sure the O-ring is properly seated and then carefully re-attach the canister to the assembly, taking care to align the filter module inside. Tighten until firm.

6. Check for leaks at either end of the DI module and at the storage tank.
7. Allow the system to produce a full tank of water.
8. Drain off and discard the initial tank of water. Do not use for cooking or drinking.
9. You are now ready to enjoy great tasting, pure Aquathin water for another 12 months!



CHAPTER

4

## Frequently Asked Questions

**Q:** How long will my sediment pre-filter last before it needs to be replaced?

**A:** Under typical conditions, the pre-filter is designed to function properly for 12 months, and should be replaced annually. Sediment concentrations vary greatly between municipal systems and well waters so there is no way of determining the lifetime of a filter without knowing more about the tap water. In some cases, it may be necessary to replace the pre-filter more frequently.

**Q:** How long will my GAC pre-filters last before they need to be replaced?

**A:** Your Aquathin AquaKING system has been designed to operate within a wide range of tap water conditions. These conditions vary greatly across municipalities, so it is difficult to state precisely how long your pre-filters will last. We have designed the system so that under the most extreme conditions your pre-filters will still be performing correctly after 12 months of use. Following an annual replacement schedule will insure your system is consistently performing as designed producing ultra-pure water which meets the standards for bio-compatibility.

**Q:** How long will my reverse osmosis membrane last?

**A:** The membrane's life depends on the water conditions as listed in the specification section of this manual. If all these conditions are met, the life of the membrane is generally 2–4 years. If a membrane fails or its performance becomes reduced before this time, the cause can usually be traced to tap water conditions outside the specifications or failure to flush.

**Q:** How do I know if there is a problem with the membrane?

**A:** The best method is to measure the resistivity (conductivity) of the RO water and compare it to the tap water. You can invest in a reliable and inexpensive resistivity meter (available from your local Authorized Aquathin Dealer) or you can send samples to them for analysis. (Poor rejection rates may also be an indication of a clogged pre-filter, so check that filter first.) A large increase in the production rate is also an indication of membrane failure, and can often be traced to the membrane having been subjected to either freezing or hot water.

**Q:** How can I monitor the performance of the unit?

**A:** Your Authorized Aquathin Dealer will register your warranty card and purchase with Aquathin Corporation. Every year upon the anniversary of your installation, Aquathin Corporation and your Aquathin Dealer will mail or email an Annual Service Reminder to have your system inspected and serviced if necessary. Also, with identical feed water pressure, the production rate should remain fairly constant. If your system begins to produce water at a much faster rate, the RO membrane may have failed. If your system is producing water at a much lower rate, replacing the pre-filter is often indicated.

To monitor the overall system rejection rate, the best method is to obtain either a resistivity meter or TDS meter from your Authorized Aquathin Dealer.

**Q:** Will I lose valuable minerals when I drink purified water?

**A:** No, the body does not readily assimilate the minerals found in drinking water. We obtain the majority of our minerals from the foods we eat. There are many more bio-available “chelated” minerals in a piece of organic fruit or a serving of organic vegetables than in several gallons of water.

**Q:** Will pure water leach minerals from my body?

**A:** This question reflects one of the common myths that are found in the water industry. It has no basis in fact or physiologic science. Pure water does perform a valuable function by helping the body eliminate wastes and unused minerals that have been excreted from cellular tissues, but it does not “leach” minerals out of the cells. This false claim was probably first made by companies wanting to boost sales of filters incapable of removing dissolved minerals and dangerous heavy metals. ASK your Authorized Aquathin Dealer for a copy of “5th Function of Water”.

**Q:** Will hot water ruin my RO membrane?

**A:** YES! Hot water over 100° F will damage the membrane and void your warranty. Make sure you use only COLD water in your Aquathin system.

**Q:** How should I store my purified water?

**A:** Ask your Authorized Aquathin Dealer about clear Aquathin polycarbonate bottles.

**Q:** How should I store my unit when not in use?

**A:** If your unit is out of service for several days (while you are vacationing, for example) no special precautions are required. However, we do recommend you flush the unit for 10-15 minutes and discard the first tank of water when you return the system to production.

**Q:** How long does it take to make a tank of water?

**A:** The rate your system produces water is dependent upon several factors including source water pressure, temperature, and the amount of total dissolved solids (TDS). We rate our membranes very conservatively, and the AquaKING Series comes with a 45 gallon per day membrane, meaning water production will normally be 1.5 – 2 gallons per hour.

**Q:** When I put my system into flush mode, it makes noise. Is this normal?

**A:** When your system is flushing, water is flowing to the drain much faster than normal production mode. The check valve will sometimes chatter with the increased flow, and this can be heard as a hum or rattle. When your system is first put in service, there may be air in the lines that can also cause noise from the system. After a few days the noise typically will go away.

You might also notice that your system will seem to start and stop (chug) when you open the flush valve. If this happens, simply open the valve a little less than fully open so some pressure is still showing on the gauge.

**Q:** How can I keep informed about Aquathin?

**A:** “Splash News Bulletin”, “Forum Q&A”, “Allergic Reaction”, “Biz Bank”, “Tech Bank”, and “Quote Bank” are all *FREE* services to all Authorized Aquathin Dealers and their Customers to keep you abreast of technology updates and industry news.

Email Aquathin at [info@aquathin.com](mailto:info@aquathin.com) to subscribe.

Visit [www.aquathin.com](http://www.aquathin.com).

CHAPTER

# 5

## L i m i t e d      W a r r a n t y

Aquathin Corporation warrants to the original owner each AquaKING Series Water Purification System to be free from defects in materials and workmanship for as long as you own the product.

### *What The Warranty Covers*

Full Lifetime Warranty on all parts (excluding normal module changes or abuse).

**Your AquaKING Series pure water appliance is a sophisticated water purification system. Failure to follow the maintenance schedule or use other than genuine Aquathin components will void the exclusive lifetime Warranty.**

### *Exceptions to Lifetime Warranty*

The Lifetime Warranty does not include damage caused by or resulting from unreasonable use, including failure to provide reasonable maintenance, or incidental or consequential damages, such as water damage, mold or damage to appliances, fixtures or other equipment.

Warranty will be void if product failure or damage is due to any of the following:



1. Misuse, misapplication, neglect (e.g. inadequate filter changes), alteration, hot feed water, freezing, or accident.
2. Improper installation, operation, or servicing.
3. Use only Genuine Authorized Aquathin components to assure efficiency and to maintain your Warranty.
4. No one is authorized to change or add to this Warranty.

***What We Will Do To Correct An Inconvenience***

Upon notice, we will repair or replace covered defective parts, free of charge. If it is necessary to return the product to an Aquathin Dealer for service, the buyer must pay for any shipping or travel costs. Aquathin Dealer will pay for any return shipping charges in the U.S. for parts or products covered under the Warranty.

An Aquathin Dealer will furnish any factory labor to make repairs on parts or products returned to the factory that are covered under the Warranty.

***How State Law Relates To The Warranty***

Some states do not allow the exclusion or limitation of incidental or consequential damages, so the above limitation or exclusion may not apply to you. This Warranty applies to the original purchaser and gives you specific legal rights. You may also have other rights which vary from state to state.

APPENDIX

A

### Specifications

Following are the recommended operating parameters for our custom rolled Reverse Osmosis membrane:

Membrane type	Aquathin Spiral Wound Polyamide Thin Film Composite (TFC)
Production	Up to 45 Gallons-Per-Day (GPD)
Maximum Operating Temperature	40–100° F (4–38° C)
Operating Pressure	45–100 psi (3.1–6.9 bar)
pH Range	2.0–11.0
TDS Level, Maximum	2000 ppm
Turbidity	< 1.0 Net Turbidity (NTU)
Chlorine (Cl <sub>2</sub> )	0.00 mg/l *
Hardness (CaCO <sub>3</sub> )	< 427 mg/l
Iron (Fe) & Manganese (Mn)	< 3.0 mg/l
Hydrogen Sulfide (H <sub>2</sub> S)	0.00 mg/l

\* Every system is equipped with our unique combination pre-filter to remove sediment and chlorine.

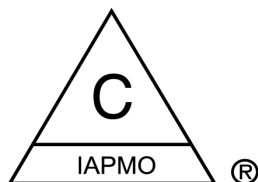
You can obtain specifics about your water supply from either your local water department or your local Authorized Aquathin Dealer. If the parameters of your water do not fall within the specified ranges as noted above, please contact your local Aquathin Dealer for further treatment options. Production is rated at optimum temperature of 70° F, 60 PSI, and 500 ppm TDS. Actual production will vary depending on local temperature, pressure, and TDS level.

Low tap water pressure will reduce the volume and quality of the water produced by your system. In low pressure situations (<45 PSI, 3.1 bar) RO/DI values cannot be assured. The addition of a booster pump (PBA-AK) is strongly recommended.

**ALWAYS USE COLD WATER**—hot water will damage the TFC membrane.

The unit must not be allowed to freeze. Freezing water will expand inside the modules—damaging the membrane and potentially rupturing the filter housings. Damage of this type will void the Warranty.

This system has been tested and certified by IAPMO R&T according to NSF/ANSI 58 and WQA S-300 for reduction of TDS. The concentration of TDS in water entering the system was reduced to less than or equal to the permissible limit for water leaving the system, as specified in WQA S-300. Testing was performed under standard laboratory conditions. Actual performance may vary. Follow installation procedures and scheduled maintenance for optimum performance.



APPENDIX

B

**Replacement Schedule**

Below you can find the recommended replacement schedule and part numbers for the components of your Aquathin water purification system.

*Replacement Components and Schedule*

<b>Module</b>	<b>Replacement Schedule</b>	<b>Order No.</b>
Sediment Pre-filter	Annually (or as needed)	100+SED
Unidirectional GAC Pre-filter	Annually	100+GAC
Deionization Module	Annually	ADI
4 Stage Aquathin High Flow RO Membrane	2-3 years (as needed)	XF-HRO
GAC Post Filter	2-3 years (as needed)	CARB10

Purchase Date: \_\_\_\_\_

Purchased From: \_\_\_\_\_

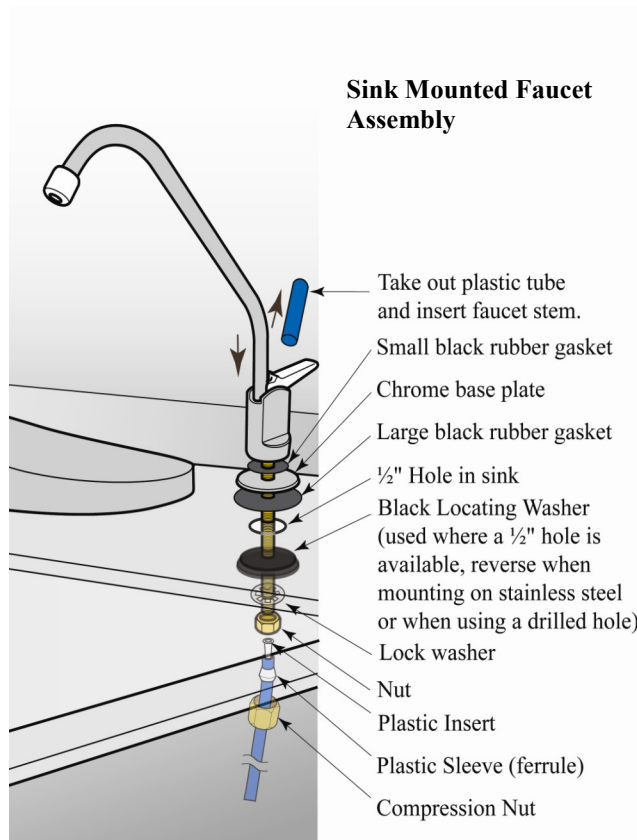
Serial/Model Number: \_\_\_\_\_

Pressure Gauge Initial Reading: \_\_\_\_\_

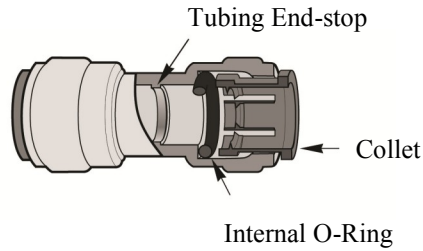
**Maintenance Log**

<b>Module Replaced</b>	<b>Date</b>

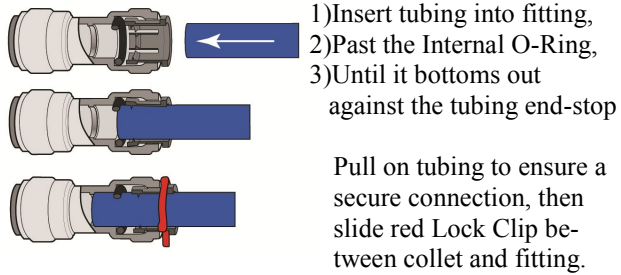
### Connections



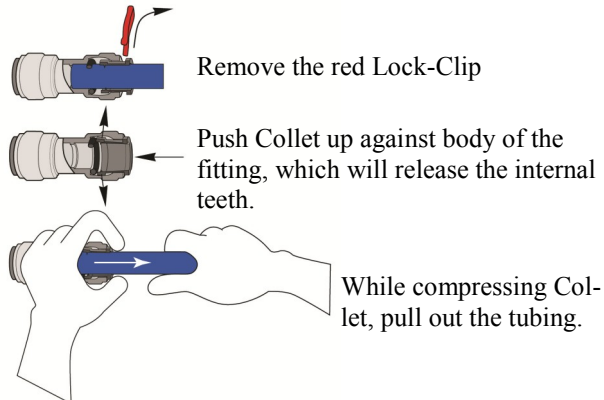
**Anatomy of a John Guest *Speedfit*® Fitting**



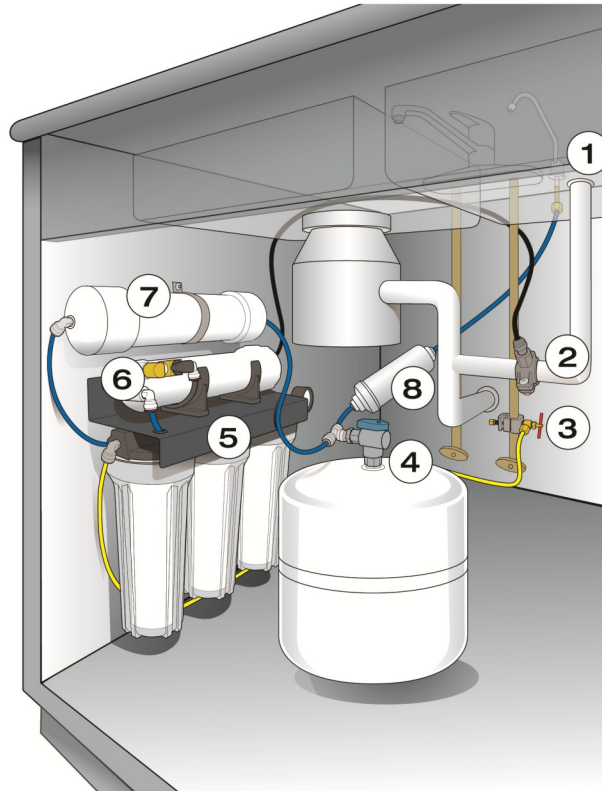
**To make a connection:**



**To remove tubing:**



### AquaKING DIMS Installation Diagram

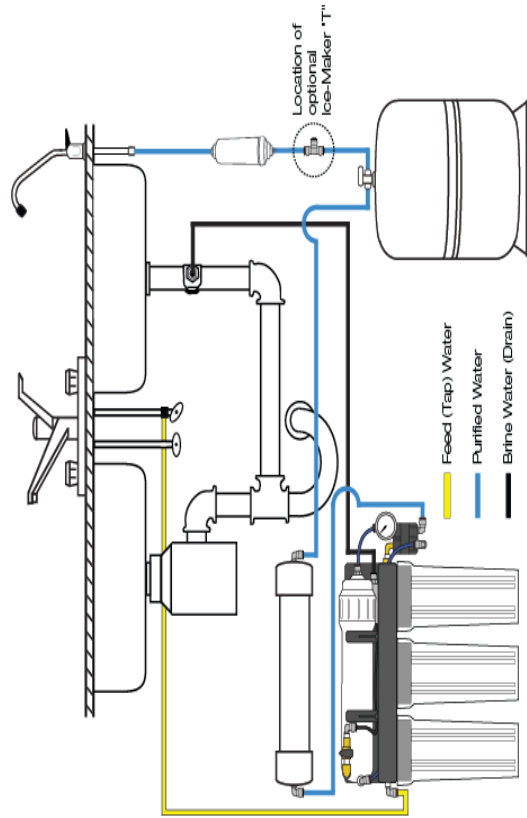


- |                        |                        |
|------------------------|------------------------|
| 1) Sink Mounted Faucet | 5) Main Assembly       |
| 2) Drain Saddle Valve  | 6) Flush Valve         |
| 3) Feed Water Valve    | 7) Deionization Module |
| 4) Tank Ball Valve     | 8) GAC Post-Filter     |



APPENDIX  
D

Schematics



Purpose of diagram is to indicate tubing connection and location of components relative to water flow. Diagram is not drawn to scale and is not intended to indicate actual position of components beneath the sink.



**www.aquathin.com**



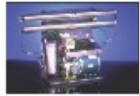
ISO 9001: 2008  
CERTIFIED



7 Patents Earned



8 Trademarks



Over 70 Systems



# 35 Years Pure Excellence

[www.aquathin.com](http://www.aquathin.com)



## aquathin USA

*Purifying the Waters of the World  
for the Best Taste in Life!*



EPA EST. NO. 52531-FL-01